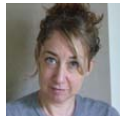


Reflecting on the Artists by Susan Thurston, Times Staff Writer Feb 17, 2011

Here is a sneak peek at some of the Lights on Tampa artists, in addition to Pablo Valbuena, and what they have planned.



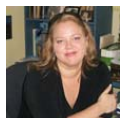
Molly Schwartz: Her work, *Watershed*, is a trio of short, animated videos that look at the terrain, history and ecology of the area's watershed. Each 90-second video focuses on a different aspect of the waterfront, from the land to the estuary to the sea. Schwartz, 39, combined video, photos and drawings of manatees, crocodiles, glowing algae and skyline reflections to create a virtual diorama. The videos, which are set to music composed by her husband, will be streamed in succession across the portal screen.



Jennifer Rosoff and Susan Taylor Lennon: University of Tampa alum Rosoff will lead about 30 teenage and young adult dancers in *Shadow Plays*, a performance that combines interpretive dance and light. Dancers will perform on a platform behind a large silk screen lit up to create silhouettes. The show on the park's main lawn will run continuously as a live DJ spins music. Audience members (yes, kids!) will be invited to dance behind the screen. Rosoff, 26, owns the Creative Movement Co., a dance event company; Lennon, 61, is director of speech, theater and dance at UT.



Eva Lee: This Connecticut-based artist created *Lux Flux*, a light portrait of Tampa using video and special effects. Lee, 45, took the footage in December of iconic downtown Tampa images, from the Straz Center to the cruise ships. She shot from land and the Hillsborough River at different times of the day, capturing the ways light reflects on the city. The result is a six-minute video for the Riverwalk portal. The original score includes the musical hum of cars passing over the Cass Street bridge.



Juliet Davis and Stephanie Tripp: Davis, an interactive media and cultural studies professor at the University of Tampa, and colleague Tripp asked the public to submit photographs that capture images of light in their neighborhoods. The submissions were part of a social media project, *Shedding Light*, which studied the notion that art is limited to elitist classes and recognizable artists. To attract the broadest base possible, Davis and Tripp hosted photography workshops and, in some cases, loaned cameras. They mixed the public's photos with their own work to create culturally and geographically diverse perspectives. The images make up a five-minute video set to music on the portal. For more information, go to sheddinglightproject.org.